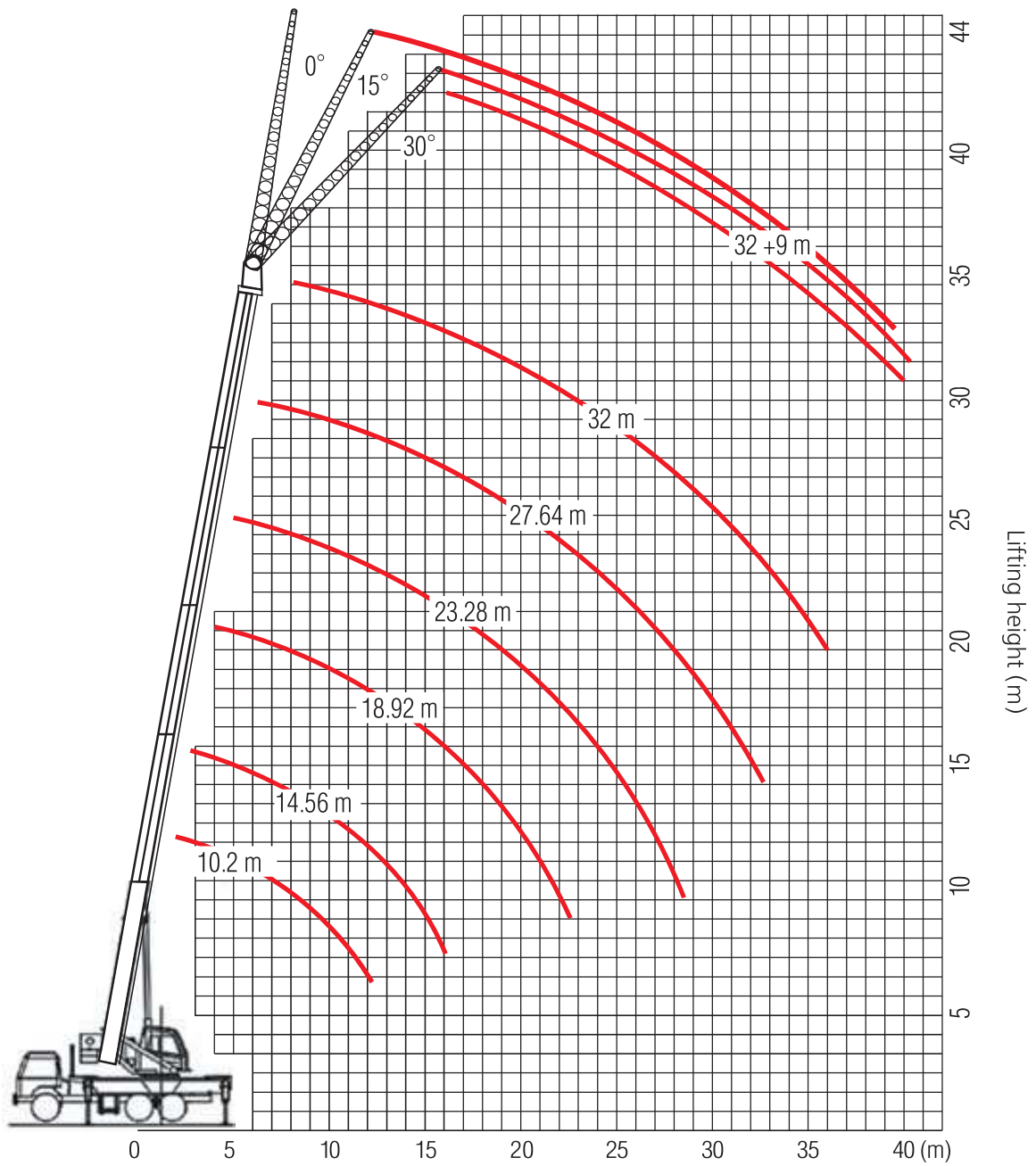


- ▷ Max. lifting capacity 32 t
- ▷ Max. lifting moment 102.0 tm
- ▷ 4-section telescopic boom 10.2 – 32.0 m

### Crane Superstructure

Lifting capacity		32 t
Min. rated range		3 m
Tail slewing radius of swingtable		3750 mm
Boom section		4
Boom shape		U-shape
Max. lifting moment	Base boom	102.0 tm
Boom length	Base boom	10.2 m
	Full-extend boom	32.0 m
	Full-extend boom+jib	51.2 m
Outrigger span (Longitudinal×Lateral)		5450 X 6200 mm
Jib offset		0° 15° 30°
Max. single rope lifting speed of main winch (no load)		115 m/min
Full extension/retraction time of boom		45/35 s
Full lifting/descending time of boom		60/52 s
Slewing speed		2.2 r/min
High Voltage Detector		included

Working ranges



Working radius (m)

Radius, m	Boom length, m					
	10.2 m	14.56 m	18.92 m	23.28 m	27.64 m	32 m
3	32000					
3.5	27400	19300	14700			
4	24600	19200	14600	11000		
4.5	22100	18600	14500	11000		
5	20400	17000	13700	10800	8600	
5.5	17900	15800	12800	10600	8400	
6	16300	14600	12100	10000	8200	6800
6.5	14100	13200	11400	9500	7900	6700
7	13000	12100	10800	8900	7600	6500
8	10600	10000	9300	7800	6700	6000
9		8500	7700	6800	6000	5400
10		7300	6600	5900	5300	4900
12		5600	4900	4500	4300	4000
14			3900	3700	3500	3300
16			3200	3000	3000	2800
18				2500	2500	2400
20				1900	2200	2100
22					1900	1800
24					1600	1500
26						1100
28						900
parts of line	8	6	5	4	3	3